



Trusted above all.



## Viking Residential Sprinkler Systems

Quick Reference Guide | EMEA





# Introduction to Residential Sprinkler Systems

Viking is renowned for the development, manufacturing, sales and distribution of excellent fire protection technologies and has been a dependable partner in fire protection for many decades.

The broad product portfolio encompasses innovative and proven system components for water, foam and gas extinguishing systems as well as fire detection systems and is a reflection of Viking's unwavering focus on providing customers with the finest products and highest level of support.

Through Viking's dedicated and knowledgeable customer service, installers of fixed fire protection systems have access to those quality products and can place their trust in the professional and dedicated support services provided by Viking employees. From the smallest project to the largest endeavour, Viking is their single-point partner with the goal to provide the right material whenever and wherever needed.

Viking is passionate about fire protection and committed to the growth of the fixed fire protection industry. As Viking is completely focused and dedicated to this market, customers can have confidence that Viking has the expertise that they need to be successful. They can count on Viking's resources and technical expertise to help them whenever they have a challenge to overcome. And they can be sure to find the right product or solution for their project with the necessary approval or accreditation.

This quick reference guide provides an overview of Viking's comprehensive range of residential sprinkler and CPVC products. Besides access to those products, customers benefit from a market leading technical support team across Europe and the Middle East, which also holds regular technical training courses on water, foam, gas and detection systems, products and maintenance.

Learn more at [www.viking-emea.com](http://www.viking-emea.com).

## Table of contents

<b>Sprinklers</b>	<b>3</b>
Pendent & Recessed Pendent	3
Concealed Pendent - Flat, Domed & Flush	4
Horizontal Sidewall	5
Flat Plate Concealed Horizontal Sidewall	6
Upright	6
Attic	7
<b>Escutcheons &amp; Coverplates</b>	<b>8</b>
Recessed and Sloped Ceiling Escutcheons	8
Coverplates & Flat Coverplate Finishes	8
<b>Residential Sprinkler Tools</b>	<b>10</b>
Installation & Removal Tools	10
<b>CPVC</b>	<b>11</b>
Pipe & Standard Fittings	11
Sprinkler Head Adapters	13
Transition Fittings	16
Waterflow Switches	16
Tools	17
Pipe Hangers & Clamps	18
Accessories	20
<b>Residential System Accessories</b>	<b>21</b>
Residential Sprinkler Risers	21
Sprinkler Extension & Hydroquench Pump Test Panel	22

For all applicable approvals, please refer to the technical documentation or contact your local Viking sales office.

# Pendent & Recessed Pendent Sprinklers

Available in 68°C and 79°C; recessed adjustment up to 16 mm (5/8")

## VK470 | K43 (3.0) | Base part no. 17147



- Enables two headed design with flows less than 75.7 lpm (20 gpm)
- Can optimize NFPA 13 residential designs when combined with larger K-factor residential sprinklers
- Available with Electroless Nickel PTFE (ENT) coating for corrosion resistance
- Lead free version VK4700: base part no. 17492
- Glass bulb

Coverage area m (ft.)	Horizontal ceiling	
	Flow lpm (gpm)	Pressure bar (psi)
3.7 x 3.7 (12 x 12)	34 (9.0)	0.49 (7.1)
4.3 x 4.3 (14 x 14)	38 (10.0)	0.76 (11.1)
4.9 x 4.9 (16 x 16)	49 (13.0)	1.30 (18.8)

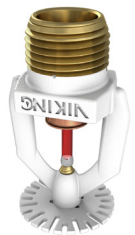
## VK430 | K62 (4.3) | Base part no. 09530



- Continually listed by UL since 1995
- Available with Electroless Nickel PTFE (ENT) coating for corrosion resistance
- Glass bulb

3.7 x 3.7 (12 x 12)	45 (12.0)	0.54 (7.8)
4.3 x 4.3 (14 x 14)	49 (13.0)	0.63 (9.1)
4.9 x 4.9 (16 x 16)	49 (13.0)	0.63 (9.1)
5.5 x 5.5 (18 x 18)	64 (17.0)	1.08 (15.6)
6.1 x 6.1 (20 x 20)	80 (21.0)	1.64 (23.9)

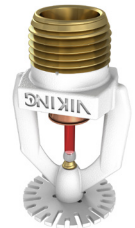
## VK468 | K71 (4.9) | Base part no. 13637



- Listed with beam ceilings up to 6.1 m x 6.1 m (20 ft. x 20 ft.)
- Available with Electroless Nickel PTFE (ENT) coating for corrosion resistance
- Lead free version VK4680: base part no. 16876
- Glass bulb

3.7 x 3.7 (12 x 12)	49 (13.0)	0.48 (7.0)
4.3 x 4.3 (14 x 14)	49 (13.0)	0.48 (7.0)
4.9 x 4.9 (16 x 16)	49 (13.0)	0.48 (7.0)
5.5 x 5.5 (18 x 18)	64 (17.0)	0.83 (12.0)
6.1 x 6.1 (20 x 20)	76 (20.0)	1.15 (16.7)

## VK466 | K75 (5.2) | Base part no. 13781



- Listed with beam ceilings up to 6.1 m x 6.1 m (20 ft. x 20 ft.)
- Available with Electroless Nickel PTFE (ENT) coating for corrosion resistance
- Lead free version VK4660: base part no. 16875
- Glass bulb

3.7 x 3.7 (12 x 12)	53 (14.0)	0.50 (7.2)
4.3 x 4.3 (14 x 14)	53 (14.0)	0.50 (7.2)
4.9 x 4.9 (16 x 16)	53 (14.0)	0.50 (7.2)
5.5 x 5.5 (18 x 18)	64 (17.0)	0.74 (10.7)
6.1 x 6.1 (20 x 20)	76 (20.0)	1.02 (14.8)

## VK472 | K84 (5.8) | Base part no. 16130



- Larger K-factor provides lowest starting pressure in NFPA 13 applications (0.1 density)
- Available with Electroless Nickel PTFE (ENT) coating for corrosion resistance
- Glass bulb

3.7 x 3.7 (12 x 12)	61 (16.0)	0.52 (7.6)
4.3 x 4.3 (14 x 14)	61 (16.0)	0.52 (7.6)
4.9 x 4.9 (16 x 16)	61 (16.0)	0.52 (7.6)
5.5 x 5.5 (18 x 18)	64 (17.0)	0.59 (8.6)
6.1 x 6.1 (20 x 20)	80 (21.0)	0.90 (13.1)

## VK458 | K107 (7.4) | Base part no. 13230



- Larger K-factor provides lowest starting pressure in NFPA 13 applications (0.1 density)
- Available with Electroless Nickel PTFE (ENT) coating for corrosion resistance
- Glass bulb

3.7 x 3.7 (12 x 12)	76 (20.0)*	0.50 (7.3)
4.3 x 4.3 (14 x 14)	76 (20.0)*	0.50 (7.3)
4.9 x 4.9 (16 x 16)	76 (20.0)*	0.50 (7.3)
5.5 x 5.5 (18 x 18)	83 (22.0)*	0.61 (8.8)
6.1 x 6.1 (20 x 20)	91 (24.0)*	0.73 (10.5)

\* Flows shown for 68°C (155°F); see data sheet for flows at 79°C (175°F).



## Flat Plate Concealed Pendent Sprinklers

Coverplate temperature = 57°C; adjustment up to 15 mm (1/2")

### VK496 | K43 (3.0) | Base part no. 23763



- Sprinkler temperatures = 68°C & 93°C
- Available with either standard, large or square coverplate
- Available with Electroless Nickel PTFE (ENT) coating for corrosion resistance
- Glass bulb

Coverage area m (ft.)	Horizontal ceiling	
	Flow lpm (gpm)	Pressure bar (psi)
3.7 x 3.7 (12 x 12)	30.3 (13)	0.49 (7.1)
4.3 x 4.3 (14 x 14)	45.4 (12)	1.10 (16.0)
4.9 x 4.9 (16 x 16)	56.8 (15)	1.72 (25.0)

### VK494 | K71 (4.9) | Base part no. 23707



- Sprinkler temperatures = 68°C, 79°C & 93°C
- Available with either standard, large or square coverplate
- "Ultra-fast" glass bulb
- LPCB approved to EN12259-14
- Standard coverplate base part no. 23459

Coverage area m (ft.)	Horizontal ceiling			
	Flow - lpm (gpm)		Pressure - bar (psi)	
	UL	LPCB	UL	LPCB
3.7 x 3.7 (12 x 12)	49 (13)	49 (13)	0.5 (7.0)	0.5 (7.0)
4.3 x 4.3 (14 x 14)	49 (13)	53 (14)	0.5 (7.0)	0.6 (9.0)
4.9 x 4.9 (16 x 16)	49 (13)	53 (14)	0.5 (7.0)	0.6 (9.0)
5.5 x 5.5 (18 x 18)	64 (17)	64 (17)	0.8 (12.0)	0.8 (12.0)
6.1 x 6.1 (20 x 20)	76 (20)	76 (20)	1.3 (17.0)	1.0 (14.5)

### VK495 | K71 (4.9) | Base part no. 25639



- Sprinkler temperatures = 68°C & 93°C
- Lowest flows for 4.3m x 4.3m spacing
- Available with Electroless Nickel PTFE (ENT) coating for corrosion resistance
- Available with either standard, large or square coverplate
- Glass bulb

Coverage area m (ft.)	Horizontal ceiling	
	Flow lpm (gpm)	Pressure bar (psi)
3.7 x 3.7 (12 x 12)	37.6 (10)	0.5 (7.3)
4.3 x 4.3 (14 x 14)	37.6 (10)	0.5 (7.3)
4.6 x 4.6 (15 x 15)	45.4 (12)	0.7 (10.5)
4.9 x 4.9 (16 x 16)	49.2 (13)	0.8 (12.3)
5.5 x 5.5 (18 x 18)	64.4 (17)	1.5 (21.1)

### VK498 | K84 (5.8) | Base part no. 23764AB



- Sprinkler temperatures = 68°C & 93°C
- Available with either standard, large or square coverplate
- Larger K-factor provides lower starting pressure in NFPA 13 applications (0.1 density)
- Available with Electroless Nickel PTFE (ENT) coating for corrosion resistance
- Glass bulb

Coverage area m (ft.)	Horizontal ceiling	
	Flow lpm (gpm)	Pressure bar (psi)
3.7 x 3.7 (12 x 12)	61 (16)	0.52 (7.6)
4.3 x 4.3 (14 x 14)	61 (16)	0.52 (7.6)
4.9 x 4.9 (16 x 16)	61 (16)	0.52 (7.6)
5.5 x 5.5 (18 x 18)	64 (17)	0.59 (8.6)
6.1 x 6.1 (20 x 20)	76 (20)	0.82 (11.9)

## Domed Concealed Pendent Sprinklers

Coverplate temperature = 57°C; adjustment up to 15 mm (1/2")

### VK468-D | K71 (4.9) | Base part no. 13637A-X



- Sprinkler temperature = 68°C & 79°C
- Glass bulb

Coverage area m (ft.)	Horizontal ceiling	
	Flow lpm (gpm)	Pressure bar (psi)
3.7 x 3.7 (12 x 12)	49 (13)	0.48 (7.0)
4.3 x 4.3 (14 x 14)	49 (13)	0.48 (7.0)
4.9 x 4.9 (16 x 16)	49 (13)	0.48 (7.0)
5.5 x 5.5 (18 x 18)	64 (17)	0.83 (12.0)
6.1 x 6.1 (20 x 20)	77 (20)	1.15 (16.7)

# Horizontal Sidewall Sprinklers

Available in 68°C and 79°C; recessed adjustment up to 16 mm (5/8")

## VK479 | K43 (3.0) | Base part no. 19707

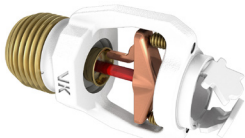


- Patent-pending "flow shaper" design provides the ultimate combination of low flows and starting pressures
- Available with Electroless Nickel PTFE (ENT) coating for corrosion resistance
- Glass bulb

Coverage area m (ft.)	Horizontal ceiling	
	Flow lpm (gpm)	Pressure bar (psi)
3.7 x 3.7 (12 x 12)	42 (11)	0.92 (13.4)
4.3 x 4.3 (14 x 14)	49 (13)	1.30 (18.8)
4.9 x 4.9 (16 x 16)	49 (13)	1.30 (18.8)

Flows shown for 68°C

## VK486 | K58 (4.0) | Base part no. 17315

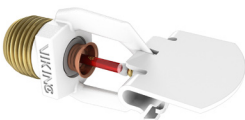


- Patent-pending "flow shaper" design provides the ultimate combination of low flows and starting pressures
- Lowest flow rate in the industry
- Available with Electroless Nickel PTFE (ENT) coating for corrosion resistance
- Lead free version VK4860: base part no. 18089
- Glass bulb

Coverage area m (ft.)	102-105 mm down from ceiling		152-305 mm down from ceiling	
	Flow lpm (gpm)	Pressure bar (psi)	Flow lpm (gpm)	Pressure bar (psi)
3.7 x 3.7 (12 x 12)	42 (11)	0.52 (7.6)	46 (12)	0.62 (9.0)
4.3 x 4.3 (14 x 14)	46 (12)	0.62 (9.0)	46 (12)	0.62 (9.0)
4.9 x 4.9 (16 x 16)	49 (15)	0.73 (10.6)	53 (14)	0.85 (12.3)
4.9 x 5.5 (16 x 18)	61 (16)	1.10 (16.0)	61 (16)	1.10 (16.0)
4.9 x 6.1 (16 x 20)	83 (22)	2.09 (30.3)	87 (23)	2.28 (33.1)
4.9 x 6.7 (16 x 22)	91 (24)	2.48 (36.0)	98 (26)	2.91 (42.3)
5.5 x 5.5 (18 x 18)	68 (18)	1.40 (20.3)	68 (18)	1.40 (20.3)
5.5 x 6.1 (18 x 20)	83 (22)	2.09 (30.3)	87 (23)	2.28 (33.1)
6.1 x 6.1 (20 x 20)	83 (22)	2.09 (30.3)	91 (24)	2.48 (36)

Flows shown for 68°C; 79°C

## VK484 | K60 (4.2) | Base part no. 16240



- Also listed for sloped ceilings up to 18° pitch; see technical datasheet for details
- Available with Electroless Nickel PTFE (ENT) coating for corrosion resistance
- Lead free version VK4840: base part no. 16881

Coverage area m (ft.)	102-105 mm down from ceiling		152-305 mm down from ceiling	
	Flow lpm (gpm)	Pressure bar (psi)	Flow lpm (gpm)	Pressure bar (psi)
3.7 x 3.7 (12 x 12)	49 (13)	0.66 (7.6)	53 (14)	0.77 (11.1)
4.3 x 4.3 (14 x 14)	53 (14)	0.77 (11.1)	61 (16)	1.00 (14.5)
4.9 x 4.9 (16 x 16)	61 (16)	1.00 (14.5)	68 (18)	1.27 (18.4)
4.9 x 5.5 (16 x 18)	72 (19)	1.41 (20.5)	76 (20)	1.56 (22.7)
4.9 x 6.1 (16 x 20)	83 (22)	1.89 (27.4)	95 (25)	2.44 (35.4)

Flows shown for 68°C; 79°C

## VK460 | K84 (5.8) | Base part no. 13933



- Patent-pending "flow shaper" design provides the ultimate combination of low flows and starting pressures
- Lowest flow rate in the industry
- Available with Electroless Nickel PTFE (ENT) coating for corrosion resistance
- Glass bulb

Coverage area m (ft.)	102-105 mm down from ceiling		152-305 mm down from ceiling	
	Flow lpm (gpm)	Pressure bar (psi)	Flow lpm (gpm)	Pressure bar (psi)
3.7 x 3.7 (12 x 12)	61 (16)	0.52 (7.6)	61 (16)	0.52 (7.6)
4.3 x 4.3 (14 x 14)	61 (16)	0.52 (7.6)	68 (18)	0.67 (9.7)
4.3 x 7.9 (14 x 26)	159 (42)	3.62 (52.4)	174 (46)	4.34 (62.9)
4.9 x 4.9 (16 x 16)	76 (20)	0.82 (11.9)	91 (24)	1.27 (18.4)
4.9 x 5.5 (16 x 18)	83 (22)	0.99 (14.4)	102 (27)	1.49 (21.7)
4.9 x 6.1 (16 x 20)	98 (26)	1.39 (20.1)	121 (32)	2.10 (30.4)
4.9 x 6.7 (16 x 22)	117 (31)	1.97 (28.6)	140 (37)	2.81 (40.7)
4.9 x 7.3 (16 x 24)	144 (38)	2.96 (42.9)	159 (42)	3.62 (52.4)
5.5 x 5.5 (18 x 18)	87 (23)	1.10 (15.7)	110 (29)	1.70 (25.0)
5.5 x 6.1 (18 x 20)	110 (29)	1.70 (25.0)	133 (35)	2.51 (36.4)
6.1 x 6.1 (20 x 20)	114 (30)	1.80 (26.8)	136 (36)	2.66 (38.5)

Flows shown for 68°C; 79°C.



## Flat Plate Concealed Horizontal Sidewall Sprinklers

Cover plate temperature = 57°C and 74°C

VK480 | K58 (4.0) | Base part no. 16116



- Sprinkler temperature = 74°C & 96°C
- Available with either standard, large or square coverplate
- Fusible link
- LPCB approved to EN12259-14
- Standard coverplate base part no. 16207

Coverage area m (ft.)	110-162 mm down from ceiling		162-314 mm down from ceiling	
	Flow lpm (gpm)	Pressure bar (psi)	Flow lpm (gpm)	Pressure bar (psi)
3.7 x 3.7 (12 x 12)	42 (11)	0.5 (7.2)	46 (12)	0.6 (9)
4.3 x 4.3 (14 x 14)	49 (13)	0.7 (10.2)	53 (14)	0.8 (12.3)
4.9 x 4.9 (16 x 16)	61 (16)	1.1 (16.0)	61 (16)	1.1 (16)
4.9 x 5.5 (16 x 18)	64 (17)	1.2 (17.4)	68 (18)	1.4 (20.3)

VK490 | K84 (5.8) | Base part no. 20409A



- Sprinkler temperature = 74°C & 96°C
- Uses coverplate base part no. 16207 (57°C & 74°C)
- Fusible link

Coverage area m (ft.)	102-152 mm down from ceiling		152-305 mm down from ceiling	
	Flow lpm (gpm)	Pressure bar (psi)	Flow lpm (gpm)	Pressure bar (psi)
3.7 x 3.7 (12 x 12)	60.6 (16)	0.52 (7.6)	64.4 (17)	0.59 (8.6)
4.3 x 4.3 (14 x 14)	64.4 (17)	0.59 (8.6)	64.4 (17)	0.59 (8.6)
4.9 x 4.9 (16 x 16)	68.1 (18)	0.66 (9.6)	71.9 (19)	0.74 (10.7)
4.9 x 5.5 (16 x 18)	79.5 (21)	0.90 (13.1)	79.5 (21)	0.90 (13.1)
4.9 x 6.1 (16 x 20)	87.1 (23)	1.08 (15.7)	98.4 (26)	1.39 (20.1)

\* Centreline of sprinkler located 102-152 mm (4-3/8" to 6-3/8") below the ceiling.  
\*\* Centreline of sprinkler located 152-305 mm (6-3/8" to 12-3/8") below the ceiling.

## Upright Sprinklers

Available in 68°C and 79°C

VK467 | K71 (4.9) | Base part no. 19154



- Intended for industrial spaces converted into residential loft-type construction
- The VK467 sprinkler can be installed onto steel sprinkler piping without offsets
- Available with Electroless Nickel PTFE (ENT) coating for corrosion resistance
- Lead free version VK4670: base part no. 19442
- Glass bulb

Coverage area m (ft.)	Horizontal ceiling		
	Flow lpm (gpm)	Pressure bar (psi)	Deflector to ceiling
3.7 x 3.7 (12 x 12)	53 (14.0)	0.56 (8.16)	76 mm-127 mm (3"-5")
4.3 x 4.3 (14 x 14)	53 (14.0)	0.56 (8.16)	
4.9 x 4.9 (16 x 16)	61 (16.0)	0.73 (10.66)	152 mm-254 mm (6"-10")
3.7 x 3.7 (12 x 12)	49 (15.0)	0.65 (9.37)	
4.3 x 4.3 (14 x 14)	49 (15.0)	0.65 (9.37)	
4.9 x 4.9 (16 x 16)	68 (18.0)	0.93 (13.49)	

## Dry HSW Sprinkler

Available in 68 °C and 93 °C

VK449 | K58 (4.0) | Base part no. 24961 & 25556



- Intended for use in spaces subject to freezing, such as balconies and garages, and supplied from a wet system in a heated area, penetrating the wall to protect the hazard in areas subject to freezing
- The VK449 is compatible with a wide range of pipe fittings, making it suitable for a variety of residential piping choices
- Available with Electroless Nickel PTFE (ENT) coating for corrosion resistance
- Glass bulb

Coverage area m (ft.)	Temperature rating 68 °C & 93 °C		
	Flow lpm (gpm)	Pressure bar (psi)	Deflector to ceiling
3.7 x 3.7 (12 x 12)	49 (13)	0.73 (10.6)	102 mm - 152 mm (4" - 6")
4.3 x 4.3 (14 x 14)	53 (14)	0.84 (12.3)	
4.9 x 4.9 (16 x 16)	68 (18)	1.40 (20.3)	
4.9 X 5.5 (16 X 18)	80 (21)	1.90 (27.6)	152 mm - 305 mm (6" - 12")
4.9 X 6.1 (16 X 20)	95 (25)	2.69 (39.1)	
3.7 x 3.7 (12 x 12)	49 (13)	0.73 (10.6)	
4.3 x 4.3 (14 x 14)	53 (14)	0.84 (12.3)	
4.9 x 4.9 (16 x 16)	68 (18)	1.40 (20.3)	
4.9 X 5.5 (16 X 18)	80 (21)	1.90 (27.6)	
4.9 X 6.1 (16 X 20)	95 (25)	2.69 (39.1)	

# Attic Sprinklers

## VK696 | K57 (4.2) | Base part no. 19538



- Sprinkler temperature = 93°C
- 15 mm / 1/2" (NPT)
- Model V-AU - Attic Upright
- Specific application concealed space sprinkler for sloped attic spaces
- Available with Electroless Nickel PTFE (ENT) coating for corrosion resistance
- Glass bulb

Base part no.	SIN	Max. coverage area m (ft.)	Minimum flow lpm (gpm)	Minimum pressure bar (psi)	Pitch
19538	VK696	3.1 x 3.6 (10 x 12)	3.8 (0.1)	0.5 (7.0)	4:12 < 12:12

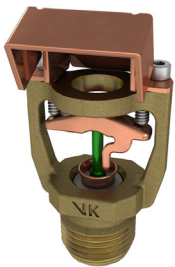
## VK697 | K80 (5.6) | Base part no. 21716



- Sprinkler temperature = 79°C (not UL) & 93°C
- 15 mm / 1/2" (NPT)
- Model V-AU - Attic Upright
- Specific application concealed space sprinkler for sloped attic spaces
- Available with Electroless Nickel PTFE (ENT) coating for corrosion resistance
- Glass bulb

Base part no.	SIN	Max. coverage area m (ft.)	Minimum flow lpm (gpm)	Minimum pressure bar (psi)	Pitch
21716	VK697	3.1 x 3.6 (10 x 12)	3.8 (0.1)	0.5 (7.0)	4:12 < 12:12

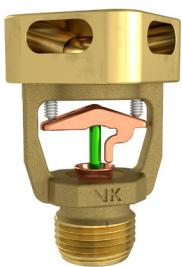
## VK693, VK694 & VK695 | K80 (5.6) | Base part nos. 19578, 19799 & 19795



- Sprinkler temperature = 93°C
- 15 mm / 1/2" (NPT)
- Model V-SD - Single Directional
- Specific application concealed space sprinkler for sloped attic spaces
- Available with Electroless Nickel PTFE (ENT) coating for corrosion resistance
- Glass bulb

Base part no.	SIN	Permissible roof span m (ft.)	Minimum flow lpm (gpm)	Minimum pressure bar (psi)	Pitch
19578	VK693	≤9.1 (30)	91 (24)	1.3 (18.4)	4:12 < 7:12
		≤12.2 (40)	137 (36)	2.8 (41.3)	4:12 < 7:12
19799	VK694	≤9.1 (30)	91 (24)	1.3 (18.4)	7:12 < 10:12
		≤12.2 (40)	133 (35)	2.7 (39.1)	7:12 < 10:12
19759	VK695	≤9.1 (30)	91 (24)	1.3 (18.4)	10:12 < 12:12
		≤12.2 (40)	133 (35)	2.7 (39.1)	10:12 < 12:12

## VK660 | K80 (5.6) | Base part no. 20952



- Sprinkler temperature = 93°C
- 15 mm / 1/2" (NPT)
- Model V-HIP - Attic Hip
- Specific application concealed space sprinkler for sloped attic spaces
- Available with Electroless Nickel PTFE (ENT) coating for corrosion resistance
- Glass bulb

Base part no.	SIN	Permissible roof span m (ft.)	Minimum flow lpm (gpm)	Minimum pressure bar (psi)	Pitch
20952	VK660	≤6.1 (20)	91 (24)	1.4 (20)	4:12 < 12:12
		≤8.8 (28)	129 (34)	2.5 (37)	

## VK681, VK682, VK683, VK684, VK685 & VK686 | K80 (5.6) | Base part nos. 19626, 19798, 19751, 19627, 19801 & 19754



- Temperature: 93°C
- 20 mm / 3/4" (NPT) & 15 mm / 1/2" (NPT)
- Model V-BB - Back to Back
- Specific application concealed space sprinkler for sloped attic spaces
- Available with Electroless Nickel PTFE (ENT) coating for corrosion resistance
- Glass bulb

Base part no.	SIN	Thread size	Permissible roof span m (ft.)	Minimum flow lpm (gpm)	Minimum pressure bar (psi)	Pitch
19626	VK681	3/4" NPT 20 mm BSP	≤18.3 (60)	144 (38)	1.5 (22.6)	4:12 < 7:12
19798	VK682		≤18.3 (60)	144 (38)	1.5 (22.6)	7:12 < 10:12
19751	VK683		≤18.3 (60)	144 (38)	1.5 (22.6)	10:12 < 12:12
19627	VK684	1/2" NPT 15 mm BSP	≤12.2 (40)	91 (24)	1.3 (18.4)	4:12 < 7:12
19801	VK685		≤12.2 (40)	91 (24)	1.3 (18.4)	7:12 < 10:12
19754	VK686		≤12.2 (40)	91 (24)	1.3 (18.4)	10:12 < 12:12



## Recessed and Sloped Ceiling Escutcheons



E-1 - Slip-On, base part no. 11123, 06419A, 06420A  
E-2 - Threaded, base part no. 11038, 11625  
F-2 - Adjustable, base part no. 06911A, 06912A



G-1 Sloped Push-on, base part no. 14315

## Coverplates



Standard, base part no. 23447 - 70 mm (2-3/4")  
Large, base part no. 23463 - 84 mm (3-5/16")  
For VK480, VK4800 & VK490: base part no. 16207



Square, base part no. 23482 - 84 mm (3-5/16")



Domed, base part no. 12207 - 80 mm (3-1/8")

## Flat Coverplate Finishes



White



Ivory



Black



Antique brass



Brushed copper



Brushed chrome



Bright brass



Polished chrome



Brushed brass



### Standard finishes

Residential flat coverplates are available in nine standard finishes and a nearly unlimited variety of custom colour finishes. Prices and lead times may vary.

### Custom finishes

Custom colours are available for coverplates and frame style sprinklers. Special order only. Additional charges will apply. Orders covering special painted products are not subject to cancellation except by written permission and then only upon agreement to make payment for work already performed. Viking reserves the right to over ship special painted products produced in excess of order quantity at no charge. No return of these products is allowed. Changes to products may result in the loss of listings or approvals.



# Installation and Removal Tools for Residential Sprinklers



Light duty wrench and optional sprinkler cap removal tool for residential concealed sprinklers VK456, VK457 & VK488

Part number	13619
-------------	-------



Heavy duty wrench for residential concealed sprinklers VK456, VK457 & VK488

Part number	13623W/B
-------------	----------



Light duty wrench for residential concealed HSW sprinklers VK480, VK4800 & VK490

Part number	16267
-------------	-------



Heavy duty wrench for residential concealed sprinkler VK494, VK495, VK496 & VK498

Part number	23143
-------------	-------



Heavy duty wrench for residential concealed HSW sprinkler VK480, VK4800 & VK490

Part number	16208W/R
-------------	----------



Heavy duty wrench for residential flush pendent sprinklers VK476 & VK479

Part number	15209W/R
-------------	----------



Shipping cap removal and escutcheon installation tool

Part number	15915
-------------	-------



Sprinkler cap removal tool for residential concealed sprinklers VK498

Part number	24340
-------------	-------



Mirage® & residential concealed sprinkler coverplate installation tool

Part no. - Standard diameter	14412
Part no. - Large diameter	14867



Installation tools and a length of CPVC pipe (all sold separately)





## CPVC Pipe

All CPVC pipes have the following approvals:



Size	Part number	Bag qty.
DN20	34PIPE95	16 lengths (152 ft)
DN25	1PIPE95	12 lengths (114 ft)
DN32	114PIPE95	7 lengths (66.5 ft)
DN40	112PIPE95	5 lengths (47.5 ft)
DN50	2PIPE95	4 lengths (38 ft)
DN65	212PIPE95	2 lengths (19 ft)
DN80	3PIPE95	1 lengths (9.5 ft)

## CPVC Standard Fittings

All CPVC standard fittings have the following approvals:



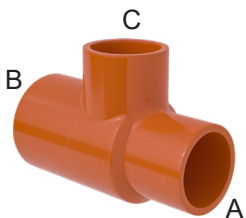
### Tee



Size	Part number	Box qty.
DN20	V5011-007	250
DN25	V5011-010	100
DN32	V5011-012	25
DN40	V5011-015	25

Size	Part number	Box qty.
DN50	V5011-020	10
DN65	V5011-025	5
DN80	V5011-030	5

### Reducing Tee



Size A x B x C	Part number	Box qty.
DN20 x DN20 x DN25	V5011R-102	50
DN25 x DN20 x DN20	V5011R-125	100
DN25 x DN20 x DN25	V5011R-126	50
DN25 x DN25 x DN20	V5011R-131	100
DN32 x DN25 x DN20	V5011R-157	25
DN32 x DN25 x DN25	V5011R-158	25
DN32 x DN25 x DN32	V5011R-159	25
DN32 x DN32 x DN20	V5011R-167	25
DN32 x DN32 x DN25	V5011R-168	25
DN32 x DN32 x DN40	V5011R-169	25
DN40 x DN32 x DN20	V5011R-201	25
DN40 x DN32 x DN25	V5011R-202	25
DN40 x DN40 x DN20	V5011R-210	25
DN40 x DN40 x DN25	V5011R-211	25

Size A x B x C	Part number	Box qty.
DN40 x DN40 x DN32	V5011R-212	25
DN40 x DN40 x DN50	V5011R-213	25
DN50 x DN50 x DN20	V5011R-248	10
DN50 x DN50 x DN25	V5011R-249	10
DN50 x DN50 x DN32	V5011R-250	10
DN50 x DN50 x DN40	V5011R-251	10
DN65 x DN65 x DN25	V5011R-289	5
DN65 x DN65 x DN32	V5011R-290	5
DN65 x DN65 x DN40	V5011R-291	5
DN65 x DN65 x DN50	V5011R-292	5
DN80 x DN80 x DN40	V5011R-337	5
DN80 x DN80 x DN50	V5011R-338	5
DN80 x DN80 x DN65	V5011R-339	5

# CPVC Standard Fittings

All CPVC standard fittings have the following approvals:



## Elbow 90°



Size	Part number	Box qty.
DN20	V5007-007	250
DN25	V5007-010	100
DN32	V5007-012	25
DN40	V5007-015	25

Size	Part number	Box qty.
DN50	V5007-020	10
DN65	V5007-025	5
DN80	V5007-030	5
DN25 x DN20	V5007R-131	100

## Elbow 45°



Size	Part number	Box qty.
DN20	V5006-007	250
DN25	V5006-010	100
DN32	V5006-012	25
DN40	V5006-015	25

Size	Part number	Box qty.
DN50	V5006-020	10
DN65	V5006-025	5
DN80	V5006-030	5

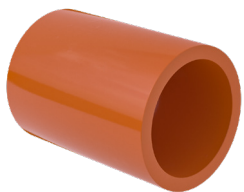
## Cross



Size	Part number	Box qty.
DN20	V5035-007	50
DN25	V5035-010	100
DN32	V5035-012	25
DN40	V5035-015	20

Size	Part number	Box qty.
DN50	V5035-020	10
DN65	V5035-025	5
DN80	V5035-030	5
DN25 x DN25 x DN20 x DN20	V5035R-131	10

## Coupling



Size	Part number	Box qty.
DN20	V5001-007	250
DN25	V5001-010	100
DN32	V5001-012	25
DN40	V5001-015	25

Size	Part number	Box qty.
DN50	V5001-020	10
DN65	V5001-025	5
DN80	V5001-030	5

## Reducing coupling



Size	Part number	Box qty.
DN25 x DN20	V5001R-131	50
DN32 x DN25	V5001R-168	25
DN40 x DN20	V5001R-210	25
DN40 x DN25	V5001R-211	25

Size	Part number	Box qty.
DN40 x DN32	V5001R-212	25
DN50 x DN25	V5001R-249	10
DN50 x DN40	V5001R-251	10

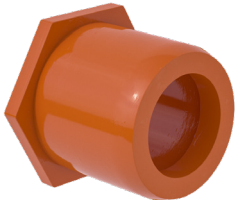


## CPVC Standard Fittings

All CPVC standard fittings have the following approvals:



### Bushing



Size	Part number	Box qty.
DN25 x DN20	V5018-131	100
DN32 x DN20	V5018-167	25
DN32 x DN25	V5018-168	25
DN40 x DN20	V5018-210	25
DN40 x DN25	V5018-211	25
DN40 x DN32	V5018-212	25
DN50 x DN20	V5018-248	10
DN50 x DN25	V5018-249	10

Size	Part number	Box qty.
DN50 x DN32	V5018-250	10
DN50 x DN40	V5018-251	10
DN65 x DN32	V5018-290	5
DN65 x DN40	V5018-291	5
DN65 x DN50	V5018-292	5
DN80 x DN50	V5018-338	5
DN80 x DN65	V5018-339	5

### Cap



Size	Part number	Box qty.
DN20	V5017-007	250
DN25	V5017-010	100
DN32	V5017-012	25
DN40	V5017-015	25

Size	Part number	Box qty.
DN50	V5017-020	10
DN65	V5017-025	5
DN80	V5017-030	5

### Test plug



Size	Part number	Box qty.
DN15	V450-005	50

## CPVC Sprinkler Head Adapters

All CPVC sprinkler head adapters have the following approvals:



### InstaSeal® sprinkler head adapter with metal NPT thread insert & rubber seal



Size	Type	Part number	Box qty.
DN20 x DN15	Socket	V5003SBG-101	100
DN25 x DN15		V5003SBG-130	50
DN20 x DN15	Spigot	V50032SBG-101	100
DN25 x DN15		V50032SBG-130	50

# CPVC Sprinkler Head Adapters

All CPVC sprinkler head adapters have the following approvals:



## InstaSeal® sprinkler head adapter tee with metal NPT thread insert & rubber seal



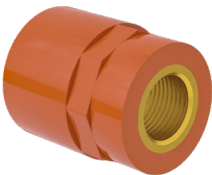
Size	Part number	Box qty.
DN20 x DN20 x DN15	V5012SBG-101	100
DN25 x DN25 x DN15	V5012SBG-130	50

## InstaSeal® sprinkler head adapter elbow with metal NPT thread insert & rubber seal



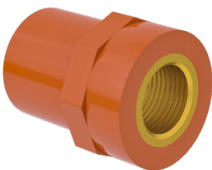
Size	Part number	Box qty.
DN20 x DN15	V50073SBG-101	100
DN25 x DN15	V50073SBG-130	50

## Female sprinkler head adapter with metal NPT thread insert



Size	Part number	Box qty.
DN20 x DN15	V5003SBI-101	100
DN25 x DN15	V5003SBI-130	50
DN25 x DN20	V5003SBI-131	50

## Spigot female sprinkler head adapter with metal NPT thread insert



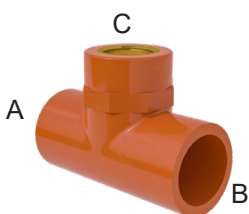
Size	Part number	Box qty.
DN20 x DN15	V50032SBI-101	100
DN25 x DN15	V50032SBI-130	50

## Sprinkler head 90° with metal NPT thread insert



Size	Part number	Box qty.
DN20 x DN15	V50073SBI-101	100
DN25 x DN15	V50073SBI-130	50
DN25 x DN20	V50073SBI-131	50
DN32 x DN15	V50073SBI-166	25

## Sprinkler head Tee with metal NPT thread insert



Size A x B x C	Part number	Box qty.	Size A x B x C	Part number	Box qty.
DN25 x DN25 x DN25	V5012SBI-010	50	DN25 x DN20 x DN15	V5012RSBI-124	50
DN20 x DN20 x DN15	V5012SBI-101	50	DN32 x DN25 x DN15	V5012RSBI-156	25
DN25 x DN25 x DN15	V5012SBI-130	50	DN40 x DN32 x DN15	V5012RSBI-199	25
DN32 x DN32 x DN15	V5012SBI-166	25	DN50 x DN40 x DN15	V5012RSBI-237	10
DN40 x DN40 x DN15	V5012SBI-209	25	DN25 x DN15 x DN25*	V5014RSBI-122*	10
DN50 x DN50 x DN15	V5012SBI-247	10			

\* Socket x FNPT x Socket

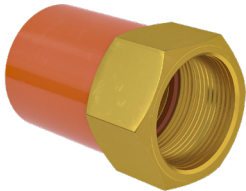


# CPVC Sprinkler Head Adapters

All CPVC sprinkler head adapters have the following approvals:



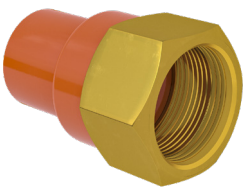
## Female adapter with BSP metal thread insert



Size	Part number	Box qty.
DN20	V5003BI-007*	50
DN25	V5003BIBSP-010	50
DN32	V5003BIBSP-012	25
DN40	V5003BIBSP-015	25
DN50	V5003BIBSP-020	10

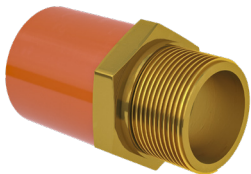
\* NPT thread

## Spigot female adapter with metal NPT thread insert



Size	Part number	Box qty.
DN20	V50032BI-007	50
DN25	V50032BI-010	50

## Male adapter with NPT metal thread insert



Size	Part number	Box qty.
DN20	V5004BI-007	50
DN25	V5004BI-010	50
DN32	V5004BI-012	25
DN40	V5004BI-015	25
DN50	V5004BI-020	10

## Sprinkler head back to back cross with metal NPT thread insert



Size	Part number	Box qty.
DN25 x DN25 x DN15 x DN15 x 1-1/8"	V50353SBIS-130	20
DN25 x DN25 x DN15 x DN15 x 1-15/16"	V50353SBIL-130	1

## Back to back Tee with metal NPT thread insert



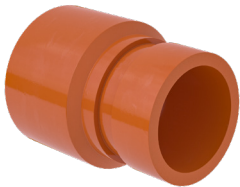
Size A x B x C	Part number	Box qty.
DN15 x DN15 x DN25 x 1-1/8"	V501133SBIS-075	48
DN15 x DN15 x DN25 x 1-15/16"	V501133SBIL-075	48

# CPVC Transition Fittings

All CPVC transition fittings have the following approvals:

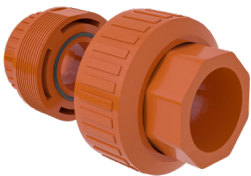


## Grooved coupling adapter



Size	Part number	Box qty.
DN32	V5001G-012	30
DN40	V5001G-015	25
DN50	V5001G-020	15
DN65	V5001G-025	20
DN65	V5001G-075	20
DN80	V5001G-030	10

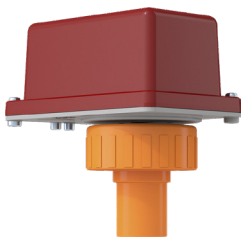
## Standard union



Size	Part number	Box qty.
DN20	V5033E-007	10
DN25	V5033E-010	10

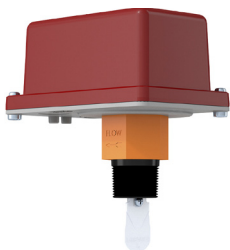
# Waterflow Switches for CPVC Pipe

## Standard glued - VSR-SG



Size	Part number
1" / DN25 - 2" / DN50	VSR-SG

## Standard threaded - VSR-ST



Size	Part number
1" / DN25 - 2" / DN50	VSR-ST

## Clamped - VSRF



Size	Part number
2" / DN50	VSRF0200
2-1/2" / DN65	VSRF0250
3" / DN80	VSRF0300



## Tools for CPVC Pipe

### Wheel cutter (quick release)



Minimum pipe size	Maximum pipe size	Part number
10 mm	63 mm	31647
25 mm	75 mm	36592
50 mm	110 mm	31657

Includes one spare wheel in knob

### Deburrer (internal & external)



Minimum pipe size	Maximum pipe size	Part number
32 mm	100 mm	04430
40 mm	76 mm	64962
100 mm	100 mm	64967

### Reamers (internal & external)



Minimum pipe size	Maximum pipe size	Part number
6 mm	36 mm	29983
12 mm	54 mm	29993

### Strap clamp



Minimum pipe size	Maximum pipe size	Part number
3/4" / DN20	3" / DN80	02247

### Chain vise



Minimum pipe size	Maximum pipe size	Part number
3/4" / DN20	4" / DN100	04452



# Pipe Hangers & Clamps for CPVC Pipe

## Hanger/Restrainer SOSR



Size	Part number	Box qty.
3/4" / DN20	597805	100
1" / DN25	597806	100
1-1/4" / DN32	597807	100
1-1/2" / DN40	597808	100
2" / DN50	597809	100

## Hanger/Restrainer 109



Size	Part number	Box qty.
3/4" / DN20	597827	100
1" / DN25	597828	100
1-1/4" / DN32	597829	100
1-1/2" / DN40	597831	100
2" / DN50	597832	100

## Hanger/Restrainer 108



Size	Part number	Box qty.
3/4" / DN20	597822	100
1" / DN25	597823	100
1-1/4" / DN32	597824	100
1-1/2" / DN40	597825	100
2" / DN50	597826	100

## Hanger/Restrainer 107



Size	Part number	Box qty.
3/4" / DN20	597816	100
1" / DN25	597817	100
1-1/4" / DN32	597818	100
1-1/2" / DN40	597819	100
2" / DN50	597821	100



## Pipe Hangers & Clamps for CPVC Pipe

### Loop hanger model FCN



Size	Thread	Part number	Box qty.
1/2" / DN15	M10	597860	100
3/4" / DN20	M10	597870	100
1" / DN25	M10	597880	100
1-1/4" / DN32	M10	597890	100
1-1/2" / DN40	M10	597900	100
2" / DN50	M10	597910	100
2-1/2" / DN65	M10	597920*	100
3" / DN80	M10	597930	50
4" / DN100	M10	597940	50
5" / DN125	M12	597950	25
6" / DN150	M12	597560**	20
8" / DN200	M12	597570	15

The FCN has a unique design that allows the hanger to be used with both CPVC and steel pipes.

\* Suitable for 73.0 mm & 76.1 mm

\*\* Suitable for 165 mm & 168 mm

### Split ring hanger without insulation 429



Size	Thread	Part number	Box qty.
1/2" / DN15	M10	595052	100
3/4" / DN20	M10	595053	100
1" / DN25	M10	595054	100
1-1/4" / DN32	M10	595056	100
1-1/2" / DN40	M10	595057	100
2" / DN50	M10	595059	100
2-1/2" / DN65	M10	595061	100
3" / DN80	M10	595062	50
4" / DN100	M10	595063	50
5" / DN125	M10	595066	25

# Accessories for CPVC Pipe

## CPVC cement



Size	Part number
473 ml / 1 US Pint	V5097P
946 ml / 1 US Quart	V5097C

## 25 mm Brush cap



Size	Part number
1" / 25 mm	V5096

## 20 mm & 37 mm Daubers



Size	Part number
3/4" / 24 mm	V5093-S
1-1/2" / 37 mm	V5093-L

## 75 mm Roller



Size	Part number
3" / 75 mm	V5097

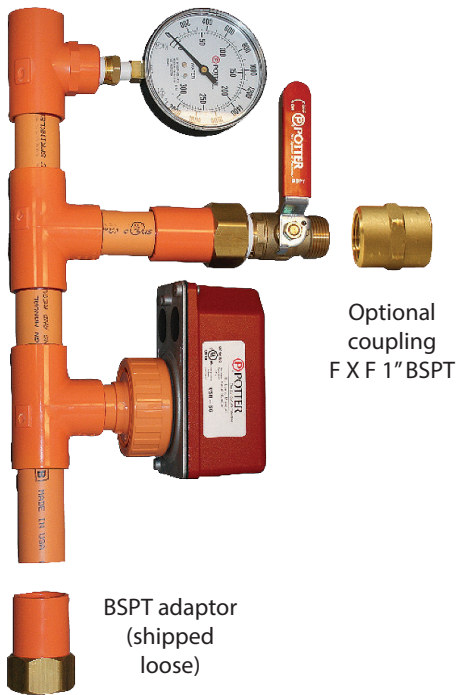
## PyroPro® HPE CPVC Pipe Sealant



Size	Part number
310 ml cartridge	PYROPROHPE



## Residential Sprinkler Riser - CPVC



The CPVC residential sprinkler riser incorporates:

- VSR-SG waterflow switch (with union fitting for easy installation and removal)
- Gauge
- TESTanDRAIN® valve
- CPVC pipe & fittings

Size	Part number
1" / DN25	1119002
1-1/4" / DN32	1119004
1-1/2" / DN40	1119006
2" / DN50	1119008

Optional coupling  
F X F 1" BSPT

BSPT adaptor  
(shipped loose)

## Residential Sprinkler Risers

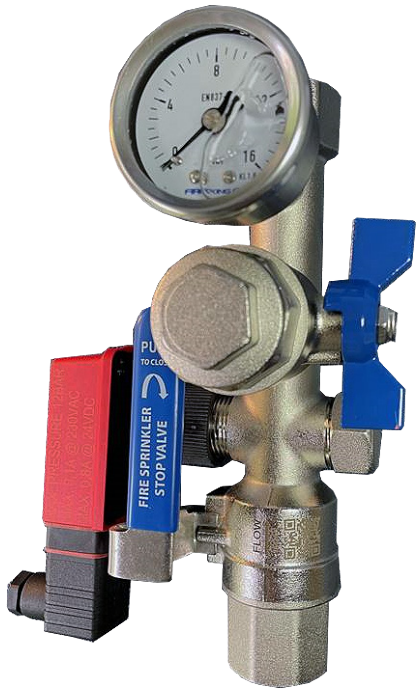


The residential sprinkler riser:

- 2 x flow switch ports
- Lockable inlet ball valve
- In accordance to BS 9251:2021 and EN 16925:2018
- Delivered with approved flow switch according to EN 12259-5 LPCB, valve monitor and glycerine filled gauge
- Flow switch specifically tested and approved for sprinkler system use. The flow switch is CE-marked (EN12259-5), LPCB, UKCA and WRAS approved

Size	Part number
1" / DN25	RMR25F
1-1/4" / DN32	RMR32F
1-1/2" / DN40	RMR40F
2" / DN50	RMR50F

# Residential Sprinkler Risers

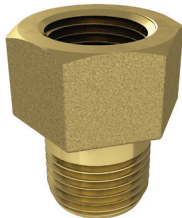


The residential sprinkler riser:

- 2 x flow switch ports
- Lockable inlet ball valve
- In accordance to BS 9251:2021 and EN 16925:2018
- Delivered with approved flow switch according to EN 12259-5 LPCB & glycerine filled gauge
- Flow switch specifically tested and approved for sprinkler system use. The flow switch is CE-marked (EN12259-5), LPCB, UKCA and WRAS approved

Size	Part number
1" / DN25	DMR25F
1-1/4" / DN32	DMR32F

# Residential Sprinkler Extension



Residential sprinkler extensions  
 1" (25.4 mm), part no. 14959  
 1-1/8" (28.6 mm), part no. 14960  
 1-1/4" (31.8 mm), part no.14961

Viking residential sprinkler extensions are designed to provide the system designer and installer with a degree of flexibility in pipe placement and sprinkler installation. Available in 1", 1-1/8" and 1-1/4" lengths, the sprinkler extension makes up small amounts of space between the sprinkler and the pipe fitting helping to prevent unnecessary pipe fabrication and ensuring proper sprinkler placement as it relates to the finished ceiling.

# Hydroquench Pump Test Panel



- Tester for residential pumps; meets requirements of BS9251:2014 for regular pump tests.
- Can be fitted to new or retrofitted to existing pumps
- Five test periods are available: 4, 7, 14, 21 and 28 day cycles
- Runs the pump and provides visible and audio alarm if required pressure is not met
- Includes power supply failure alarm
- Part number: **HYDROQ**





## Europe, Middle East & Africa

### BENELUX

**Viking SupplyNet bv**  
Eekboerstraat 28b-3  
NL-7575 AX Oldenzaal  
Netherlands  
Tel.: +31 (0)541 573233  
vikingnetherlands@viking-emea.com

### CENTRAL & EASTERN EUROPE

**Viking GmbH**  
Industriestr. 10/12  
D-23840 Bad Oldesloe  
Germany  
Tel.: +49 (0)4531 803 8087  
vikinggermany@viking-emea.com

### FRANCE

**Sprinkler Viking France S.à r.l.**  
Centre d'Affaires CESCO  
4, rue Marconi  
BP 25180  
F-57075 Metz Cedex 03  
France  
Tel.: +33 (0)800 10 29 23  
vikingfrance@viking-emea.com

### IBÉRICA

**Viking Sprinkler S.A.**  
Calle Picos de Europa 4A  
San Fernando de Henares  
E-28830 Madrid  
Spain  
Tel.: +34 91 677 8352  
vikingiberica@viking-emea.com

### ITALY

**Viking Italia S.r.l.**  
Via Livinallongo, 3  
I-20139 Milan (MI)  
Italy  
Tel.: +39 (0)2 3055 0778  
vikingitaly@viking-emea.com

### MIDDLE EAST

**Viking Arabia FZE**  
LOB 19 Office #2007  
Post Box No. 17531  
Jebel Ali Free Zone, Dubai  
United Arab Emirates  
Tel.: +971 (0)4 8895 561  
vikingdubai@viking-emea.com

### NORDIC

**Viking Nordic AB**  
Staffans Väg 5  
S-192 78 Sollentuna  
Sweden  
Tel.: +46 (0)8 594 415 90  
vikingsweden@viking-emea.com

### POLAND

**Viking SupplyNet Sp. z o.o.**  
ul. Żelazna 59  
PL-00 848 Warsaw  
Poland  
Tel.: +48 22 103 30 54  
vikingpoland@viking-emea.com

### ROMANIA & BULGARIA

**Viking Romania S.r.l.**  
Strada Vulturilor 18-18A, cam 3  
The LOBBY  
RO-030855 Bucharest  
Romania  
Tel.: +40 21 311 51 48  
vikingromania@viking-emea.com

### TURKEY

**Viking Turkey Yangın Korunum Sistemleri Ticaret A.Ş.**  
Sahrayıcedit Mah. Halk Sokak  
Golden Plaza C Blok No:29, Kat:4, Daire:8  
Sahrayı Cedit, Kadıköy - 34734 İstanbul  
Turkey  
Tel.: +90 (0)216 403 18 00  
vikingturkey@viking-emea.com

### UK & IRELAND

**Viking SupplyNet Ltd.**  
Unit 2 - Byram House, Newborn Court  
Chapel Street  
Epworth DN9 1HQ  
United Kingdom  
Tel.: +44 (0)1427 871 000  
vikinguk@viking-emea.com

For further information,  
please visit  
[www.viking-emea.com](http://www.viking-emea.com)



For further information, please contact your local Viking sales office or refer to the technical documentation.  
The contents of this publication are subject to modifications without notice.

Photo  
Cover: Fotolia © Corinne Bomont

Trusted above all.

Viking S.A. | 21, Z.I. Haneboesch, L-4562 Differdange / Niederborn, Luxembourg | Tel.: +352 58 37 37 - 1, vikinglux@viking-emea.com

