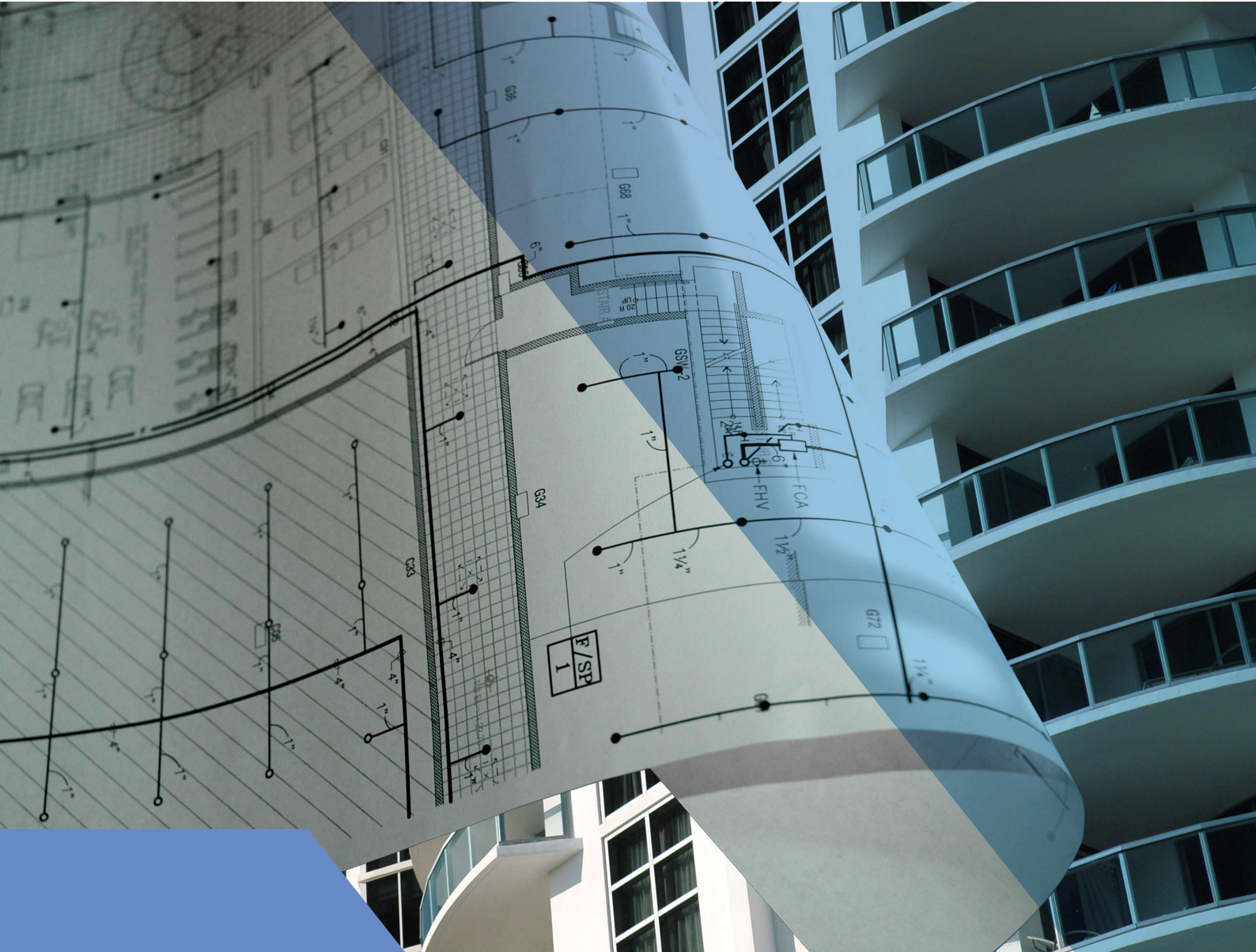




Trusted above all.



## Sprinklers Accessories

Quick Reference Guide | EMEA





# Introduction to Sprinkler Accessories

Viking is renowned for the development, manufacturing, sales and distribution of excellent fire protection technologies and has been a dependable partner in fire protection for many decades.

The broad product portfolio encompasses innovative and proven system components for water, foam and gas extinguishing systems as well as fire detection systems and is a reflection of Viking's unwavering focus on providing customers with the finest products and highest level of support.

Through Viking's dedicated and knowledgeable customer service, installers of fixed fire protection systems have access to those quality products and can place their trust in the professional and dedicated support services provided by Viking employees. From the smallest project to the largest endeavour, Viking is their single-point partner with the goal to provide the right material whenever and wherever needed.

Viking is passionate about fire protection and committed to the growth of the fixed fire protection industry. As Viking is completely focused and dedicated to this market, customers can have confidence that Viking has the expertise that they need to be successful. They can count on Viking's resources and technical expertise to help them whenever they have a challenge to overcome. And they can be sure to find the right product or solution for their project with the necessary approval or accreditation.

This quick reference guide provides an overview of Viking's comprehensive range of sprinkler accessories. Besides access to those products, customers benefit from a market leading technical support team across Europe and the Middle East, which also holds regular technical training courses on water, foam, gas and detection systems, products and maintenance.

Learn more at [www.viking-emea.com](http://www.viking-emea.com).

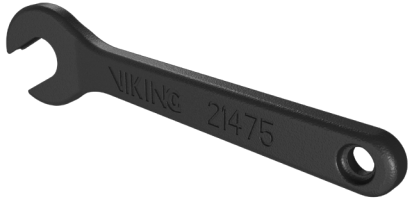
## Table of contents

Sprinkler Wrenches	3
Installation Tools	8
Escutcheons	9
Water Shields	14
Guards	15
Shields & Guards Assembly	16
Sprinkler Cabinets	17
Wax	17
Sprinkler / Wrench List	18

**For all applicable approvals, please refer to the technical documentation or contact your local Viking sales office.**

# Sprinkler Wrenches

## Commercial



Frame style sprinklers and nozzles

Part number 21475M/B



Wax coated frame style sprinklers

Part number 10896W/B



Wax coated frame style sprinklers and domed concealed sprinklers

Part number 13577W/B



Light duty wrench & optional cap removal tool for QR and EC concealed sprinklers VK461, VK462, VK463, VK464, VK465, VK632 & VK634

Part number 14031



Heavy duty wrench for QR and EC concealed sprinklers VK461, VK462, VK463, VK464, VK465, VK632 & VK634

Part number 14047W/B



Light duty wrench & optional cap removal tool for QR ELO and EC ELO concealed sprinklers VK636 & VK469

Part number 15466



Heavy duty wrench for QR ELO and EC ELO concealed sprinklers VK636 & VK469

Part number 15467W/B



Light duty wrench for Mirage® concealed and flush sprinklers

Part number 10366W/B



Heavy duty wrench for Mirage® concealed and flush sprinklers

Part number 08336W/B



Recessed horizontal sidewall sprinklers with protective caps and domed concealed horizontal sidewall sprinklers

Part number 13655W/B



# Sprinkler Wrenches

## Commercial



Sprinkler 21 MX3 and MX5 sprinklers   Socket	
Part number	843755



Sprinkler 21 MX3 and MX5 sprinklers   Spanner	
Part number	843538



Sprinkler 21 MX3 and MX5 Undercover sprinklers   Spanner	
Part number	845905

## Storage



Standard adjustable and plain barrel dry sprinklers, K242/K16.8 & ECOH K200/K14 sprinklers	
Part number	07297W/B



High Challenge®, upright ESFR and ELO sprinklers	
Part number	05118CW/B



Coated, recessed and domed concealed ELO sprinklers	
Part number	11663W/B



Pendent K200/K14 and K242/K16.8 ESFR sprinklers (use Side A)	
Part number	13635W/B



Pendent K360/K25, K320/K22 and K400/K28 ESFR and K280/K19.6 CMSA sprinklers (use Side B)	
Part number	13635W/B



Upright EC K360/K25 sprinklers	
Part number	16888M/B

# Sprinkler Wrenches

## Extended coverage



Standard adjustable and plain barrel dry sprinklers, K242/K16.8 & ECOH K200/K14 sprinklers

Part number 07297W/B



Coated and recessed ECOH K200/K14 sprinklers

Part number 13032W/B



Upright EC K360/K25 sprinklers

Part number 16888M/B



Light duty wrench & optional cap removal tool for QR and EC concealed sprinklers  
VK461, VK462, VK463, VK464, VK465, VK496, VK498, VK632 & VK634

Part number 14031



Heavy duty wrench for QR and EC concealed sprinklers  
VK461, VK462, VK463, VK464, VK465, VK496, VK498, VK632 & VK634

Part number 14047W/B



Light duty wrench & optional cap removal tool for QR ELO and EC ELO concealed sprinklers  
VK636 & VK469

Part number 15466



Heavy duty wrench for QR ELO and EC ELO concealed sprinklers  
VK636 & VK469

Part number 15467W/B



# Sprinkler Wrenches

## Dry



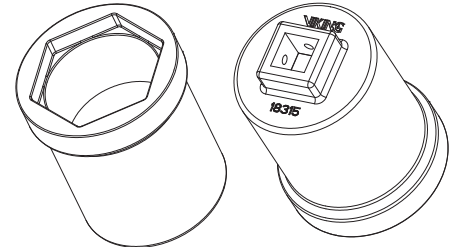
Standard adjustable and plain barrel dry sprinklers, K242/K16.8 & ECOH K200/K14 sprinklers

Part number 07297W/B



Recessed and domed concealed dry sprinklers

Part number 07565W/B



Heavy duty wrench for recessed flush dry sprinklers | VK482

Part number 18315



SW36 Dry sprinklers | Socket

Part number 848842

## Residential



Light duty wrench and optional sprinkler cap removal tool for residential concealed sprinklers VK456, VK457 & VK488

Part number 13619



Heavy duty wrench for residential concealed sprinklers VK456, VK457 & VK488

Part number 13623W/B



Light duty wrench for residential concealed HSW sprinklers VK480, VK4800 & VK490

Part number 16267



Heavy duty wrench for residential concealed HSW sprinkler VK480, VK4800 & VK490

Part number 16208W/R



Heavy duty wrench for residential flush pendent sprinkler VK479

Part number 15209W/R



Cap removal tool for residential concealed sprinkler VK498

Part number 24340

# Sprinkler Wrenches

## Residential



Heavy duty wrench for concealed residential  
sprinkler  
VK494, VK495, VK496 & VK498

Part number	23143
-------------	-------

## Special



Heavy duty wrench for Mirage® concealed  
and flush sprinklers

Part number	08336W/B
-------------	----------



Institutional style flush sprinklers  
For installation of the escutcheon plate

Part number	10551W/B
-------------	----------



Institutional style flush sprinklers  
Spanner wrench for escutcheon plate removal

Part number	10729
-------------	-------



Pin type spanner

Part number	843997
-------------	--------



# Installation Tools



Mirage® & residential concealed sprinkler coverplate installation tool Standard diameter

Part number 14412



Mirage® & residential concealed sprinkler coverplate installation tool Large diameter

Part number 14867

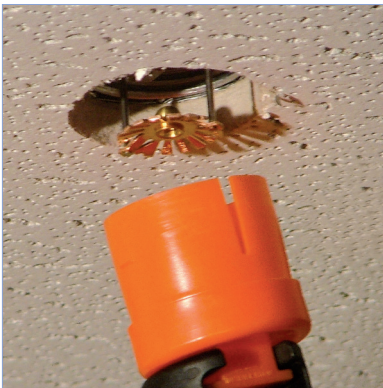


Shipping cap removal and escutcheon installation tool

Part number 15915



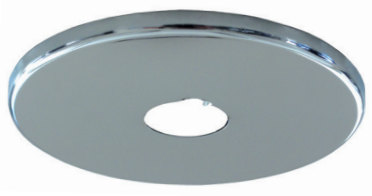
Installation tools and a length of CPVC pipe (sold separately)





# Escutcheons

## Flat (Single piece)



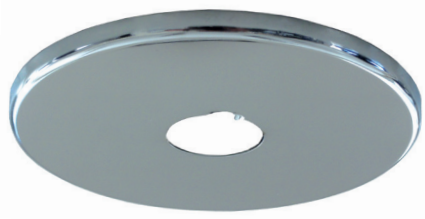
2-3/4" / 70 mm diameter		
Size	Finish	Part number
1/2"/15 mm	Brass	02960AB
1/2"/15 mm	Chrome	02960AF
1/2"/15 mm	Black	02960AM/B
1/2"/15 mm	Pure white RAL9010	02960AM/RAL9010
1/2"/15 mm	White	02960AM/W
3/4"/20 mm	Brass	05464AB
3/4"/20 mm	Chrome	05464AF
3/4"/20 mm	White	05464AM/W

2-3/4" / 70 mm diameter   Stainless steel		
Size	Finish	Part number
1/2"/15 mm	Chrome	07526F
1/2"/15 mm	ENT	07526JN
3/4"/20 mm	Chrome	09596F
3/4"/20 mm	ENT	09596JN



73 mm diameter		
Size	Finish	Part number
1/2"/15 mm	White	ROS0371PW

72mm diameter   Model D			
Size	Finish	Material	Part number
3/8"/10 mm	Silver	Aluminium	841873
1/2"/15 mm	Silver	Aluminium	779285



3-5/16" / 84 mm diameter   Stainless steel		
Size	Finish	Part number
1/2"/15 mm	Chrome	09488F
1/2"/15 mm	White	09488M/W
1/2"/15 mm	ENT	09488JN

3-5/16" / 84 mm diameter		
Size	Finish	Part number
1/2"/15 mm	Brass	01960AB
1/2"/15 mm	Chrome	01960AF
1/2"/15 mm	Black	01960AM/B
1/2"/15 mm	White	01960AM/W
3/4"/20 mm	Chrome	01015AF

## Flat (Split-ring)



2-3/4" / 70 mm diameter		
Size	Finish	Part number
1/2"/15 mm	Chrome	FCP0050
3" / 75 mm diameter		
3/4"/20 mm	Chrome	FCP0075
86 mm diameter		
1"/25 mm	Chrome	FCP0100



# Escutcheons

## Raised (Single piece)



74 mm diameter   Model G			
Size	Finish	Material	Part number
1/2"/15 mm	Traffic white RAL9016	EPDM rubber	845151



3-1/16" / 78 mm diameter		
Size	Finish	Part number
1/2"/15 mm	Chrome	01961BF
1/2"/15 mm	White	01961BM/W
3/4"/20 mm	Chrome	01016AF
3/4"/20 mm	White	01016AM/W



3-1/16" / 78 mm diameter   For adjustable standard dry sprinklers		
Size	Finish	Part number
1"/25 mm	Chrome	07741F
1"/25 mm	White	07741M/W



72mm diameter   Model A			
Size	Finish	Material	Part number
3/8"/10 mm	White	Polyethylene	789593
1/2"/15 mm	White	Polyethylene	216039

## Raised (Sliding two piece)



Size	Finish	Type	Adjustment	Part number
1/2"/15 mm	Chrome	Skirt	90 mm	01-500
1/2"/15 mm	Chrome	Cup	50 mm	01-600
1/2"/15 mm	White	Skirt	90 mm	01-502
1/2"/15 mm	White	Cup	50 mm	01-602
3/4"/20 mm	Chrome	Skirt	90 mm	01-520
3/4"/20 mm	Chrome	Cup	50 mm	01-620
3/4"/20 mm	White	Skirt	90 mm	01-522
3/4"/20 mm	White	Cup	50 mm	01-622

# Escutcheons

## Recessed (Single piece)



### 90 mm diameter | Model H | For concrete ceilings

Size	Finish	Part number
3/8"/10 mm	White	841994
1/2"/15 mm	White	841995
3/8"/10 mm	Stainless steel	841992
1/2"/15 mm	Stainless steel	841993

## Recessed (Slip-on)



### 78 mm diameter | Model E-1

#### Includes cup and outer ring | 16 mm adjustment

Size	Finish	Part number
3/8"/10 mm	Brass	11123B
3/8"/10 mm	Chrome	11123F
3/8"/10 mm	Black	11123M/B
3/8"/10 mm	White	11123M/W
1/2"/15 mm	Brass	06419AB
1/2"/15 mm	Chrome	06419AF
1/2"/15 mm	Black	06419AM/B
1/2"/15 mm	Pure white RAL9010	06419AM/RAL9010
1/2"/15 mm	White	06419AM/W
3/4"/20 mm	Brass	20369B
3/4"/20 mm	Chrome	20369F
3/4"/20 mm	Black	20369M/B
3/4"/20 mm	Pure white RAL9010	20369M/RAL9010
3/4"/20 mm	White	20369M/W

### 78 mm diameter | Model E-1

#### Includes cup and outer ring | 16 mm adjustment | Stainless steel

1/2"/15 mm	Chrome	07902F
1/2"/15 mm	White	07902M/W
1/2"/15 mm	ENT	07902JN
3/4"/20 mm	Chrome	20123F
3/4"/20 mm	White	20123M/W
3/4"/20 mm	ENT	20123JN



### 75 mm diameter | Model ROS

#### Includes cup and outer ring

Size	Finish	Part number
1/2"/15 mm	Chrome	ROS0372PCS
1/2"/15 mm	White	ROS0372PWS
3/4"/20 mm	Chrome	ROS020PCS
3/4"/20 mm	White	ROS020PWS



## Escutcheons

### Slip-on (two piece)



90 mm diameter   Model E		
Finish		Part number
Traffic white RAL9016		813905
Chrome		817054
Escutcheon spring   For model E		
3/8"/10 mm	Traffic white RAL9016	813784
3/8"/10 mm	Chrome	813838
1/2"/15 mm	Traffic white RAL9016	813851
1/2"/15 mm	Chrome	813875

### Slip-on spring clip (two piece)



86 mm diameter   Model F		
Finish		Part number
Traffic white RAL9016		879189
Chrome		879190
Centering bushing   For model F		
3/8"/10 mm	Traffic white RAL9016	841949
3/8"/10 mm	Chrome	841716
1/2"/15 mm	Traffic white RAL9016	841950
1/2"/15 mm	Chrome	841543

### Thread-on (two piece)



80 mm diameter   Model E-2		
Includes cup and outer ring   21 mm adjustment		
Size	Finish	Part number
1/2"/15 mm	Chrome	11038F
1/2"/15 mm	White	11038M/W
3/4"/20 mm	Chrome	11625F
3/4"/20 mm	White	11625M/W

### Thread-on (two piece) | Seismic



130 mm diameter   Model E-3		
Includes cup and outer ring   21 mm adjustment		
Size	Finish	Part number
1/2"/15 mm	Chrome	18347F
1/2"/15 mm	White	18347M/W
3/4"/20 mm	Chrome	18348F
3/4"/20 mm	White	18348M/W

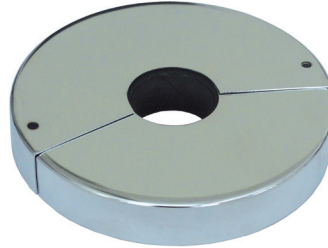
### Sidewall



102 mm diameter   Model G-1   Adjustable for sloped ceilings		
Size	Finish	Part number
1/2"/15 mm	Chrome	14315F
1/2"/15 mm	White	14315M/W
3/4"/20 mm	Chrome	14955F
3/4"/20 mm	White	14955M/W

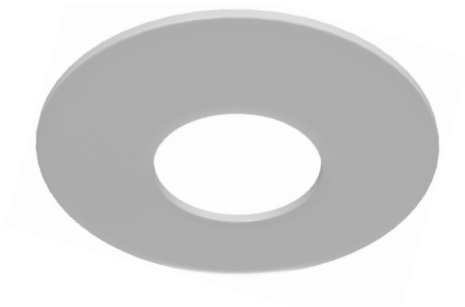
# Escutcheons

## Special



Type	Size	Finish	Part number
Institutional sprinkler lockring	83 mm	Chrome	10627F
Institutional sprinkler retaining flange assembly	-	Chrome	10599
For sheet steel or cleanroom ceiling	1/2"/15 mm	Brass - Aluminium	843928

## Expansion plate



Type	Finish	Part number
127 mm diameter   Use with E-1, E-2 and F-1 escutcheons	Brass	12620B
	Chrome	12620F
	Black	12620M/B
127 mm diameter   Use with domed concealed sprinklers	White	12620M/W
	Chrome	13128F
135 mm diameter   Use with VK636 concealed sprinkler	White	13128M/W
	Chrome	16340F
	White	16340M/W

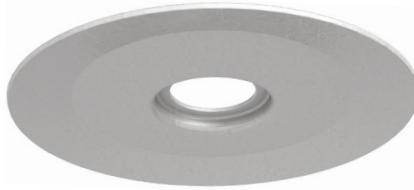


# Water Shields

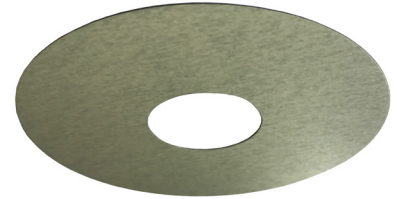
## Pendent



76 mm diameter   Model F-1		
Size	Finish	Part number
1/2"/15 mm	Chrome	10323
3/4"/20 mm	Chrome	10324



90 mm diameter   Model C-1		
Size	Finish	Part number
1/2"/15 mm	Chrome	06467B
3/4"/20 mm	Chrome	06656B



82 mm diameter   Model FKSH		
Size	Finish	Part number
1/2"/15 mm	Galvanised steel	FKSH050
3/4"/20 mm	Galvanised steel	FKSH075 <sup>1</sup>



160 mm diameter		
Size	Finish	Part number
3/8"/10 mm	Galvanised	2050037
1/2"/15 mm	Galvanised	2050050
3/4"/20 mm	Galvanised	2050075



160 mm diameter   Directional		
Size	Finish	Part number
3/8"/10 mm	Galvanised	2050037D
1/2"/15 mm	Galvanised	2050050D
3/4"/20 mm	Galvanised	2050075D



160 mm diameter		
Size	Finish	Part number
1/2"/15 mm	Galvanised	CHN0050
3/4"/20 mm	Galvanised	CHN0075



Baffle plate   Flat		
Size	Finish	Part number
3/8"/10 mm	Galvanised	751709
1/2"/15 mm	Galvanised	594644



Model Omega		
Size	Finish	Part number
3/8"/10 mm	Galv.	845628 - with cup spring
1/2"/15 mm	Galv.	847633 - with O-ring

## Upright



112 mm diameter   Model E-1   For use with D-1 guard		
Size	Finish	Part number
1/2"/15 mm, 3/4"/20 mm	Chrome	10326



Water shield   Sprinkler 21   Use with sprinkler guard 843480		
Size	Finish	Part number
1/2"/15 mm	Chrome	843970

<sup>1</sup> Note: This shield must be used with a guard

# Guards

## Pendent



Model A-1		
Size	Finish	Part number
1/2"/15 mm, 3/4"/20 mm	Chrome	05446A

Model C-1 <sup>1</sup>		
Size	Finish	Part number
1/2"/15 mm, 3/4"/20 mm	Chrome	06471A

Model FKGP		
Size	Finish	Part number
1/2"/15 mm, 3/4"/20 mm	Chrome	FKGP050075C

## Upright & pendent



Dry sprinkler guard For dry upright, dry vertical sidewall and dry pendent sprinklers		
Size	Finish	Part number
-	Chrome	08954

Model D-1 Can be used for standard and ELO upright and pendent sprinklers		
Size	Finish	Part number
1/2"/15 mm, 3/4"/20 mm	Chrome	10325
1/2"/15 mm, 3/4"/20 mm	Satinless Steel	12198
3/4"/20 mm	Chrome (ELO)	20418
Model D-1 guard and Model F-1 shield combined are approved for use with FM approved intermediate sprinklers		

Sprinkler 21 guard Can be used on upright and pendent sprinklers		
Size	Finish	Part number
3/8"/10 mm	Galvanised	912248
1/2"/15 mm	Galvanised	843480

## ESFR Sprinkler Guard - VK506, VK510 & VK514



Model EG-100		
Size	Finish	Part number
1" NPT	Chrome	24988F
	Painted (Red)	24988M/R



Sprinkler 21 cage Can be used on upright and pendent sprinklers		
Size	Finish	Part number
3/8"/10 mm	Stainless steel	845794
1/2"/15 mm		

<sup>1</sup> Note: the guard C-1 cannot be used without the C-1 water shield



# Shields & Guards Assembly

## Water shield & guard assembly | Pendent



Model C-1		
Size	Finish	Part number
1/2"/15 mm	Chrome	06509A
3/4"/20 mm	Chrome	06682A

## Water shield & guard assembly | Upright



Model B-1		
Size	Finish	Part number
1/2"/15 mm	Chrome	05866A



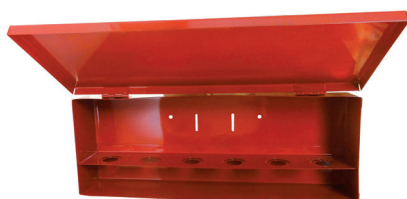
Model FKGU		
Size	Finish	Part number
1/2"/15 mm, 3/4"/20 mm	Chrome	FKGU050075C



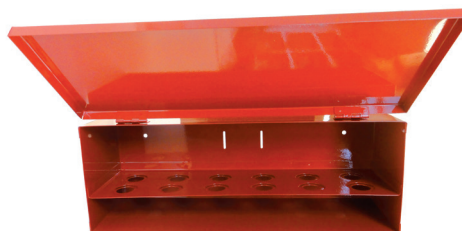
Sprinkler 21		
Size	Finish	Part number
3/8"/10 mm	Galvanised	912247 (water shield & guard assembly)
1/2"/15 mm	Galvanised	843970 (water shield with screw)



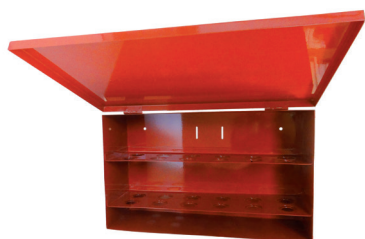
# Sprinkler Cabinets



For 6 sprinklers		
Size	Finish	Part number
1/2"/15 mm, 3/4"/20 mm	Red	SHC06



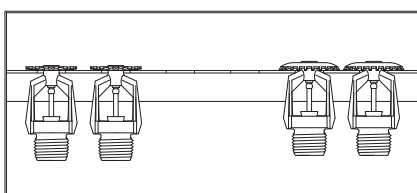
For 12 sprinklers		
Size	Finish	Part number
1/2"/15 mm, 3/4"/20 mm	Red	SHC12



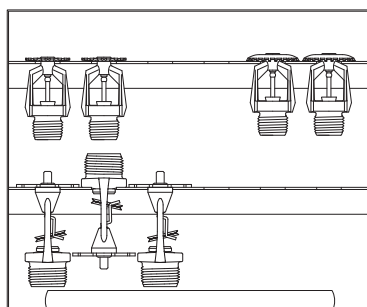
For 24 sprinklers		
Size	Finish	Part number
1/2"/15 mm, 3/4"/20 mm	Red	SHC24



For 36 sprinklers		
Size	Finish	Part number
1/2"/15 mm, 3/4"/20 mm	Red	SHC36



For 5-6 K17 ESFR & K25 EC sprinklers		
Size	Finish	Part number
1"/25 mm	Red	01731A



For 6 High Challenge® & upright ESFR sprinklers		
Size	Finish	Part number
3/4"/20 mm	Red	03985A



For 50 standard spray sprinklers		
Size	Finish	Part number
1/2"/15 mm	Red	845308

# Touch-up Wax

Type	Part number
For touch-up - 450 g for 68°C & 74°C sprinklers	02568A
For touch-up - 450 g for 79°C & 93°C sprinklers	04146A
For touch-up - 450 g for 104°C & 141°C sprinklers	02569A



# Sprinkler / Wrench List

SIN Number	Wrench				SIN Number	Wrench			
	Standard	Standard wax	Wax	Recessed		Standard	Standard wax	Wax	Recessed
VK001	21475M/B	10896W/B	13577W/B	-	VK204	21475M/B	10896W/B	13577W/B	-
VK002	21475M/B	10896W/B	13577W/B	-	VK206	21475M/B	10896W/B	13577W/B	-
VK003	21475M/B	10896W/B	13577W/B	13655W/B	VK2503	07297W/B	-	-	07565W/B
VK004	21475M/B	10896W/B	13577W/B	13655W/B	VK2523	07297W/B	-	-	07565W/B
VK006	21475M/B	10896W/B	13577W/B	-	VK2543	07297W/B	-	-	07565W/B
VK008	21475M/B	10896W/B	13577W/B	-	VK2753	07297W/B	-	-	07565W/B
VK015	21475M/B	10896W/B	13577W/B	13655W/B	VK2773	07297W/B	-	-	07565W/B
VK021	21475M/B	10896W/B	13577W/B	-	VK2793	07297W/B	-	-	07565W/B
VK023	21475M/B	10896W/B	13577W/B	13655W/B	VK282	07297W/B	-	-	07565W/B
VK100	21475M/B	10896W/B	13577W/B	-	VK2843	07297W/B	-	-	07565W/B
VK102	21475M/B	10896W/B	13577W/B	13655W/B	VK286	07297W/B	-	-	07565W/B
VK104	21475M/B	10896W/B	10896W/B	10896W/B	VK2883	07297W/B	-	-	07565W/B
VK106	21475M/B	-	-	-	VK290	07297W/B	-	-	07565W/B
VK108	21475M/B	10896W/B	13577W/B	-	VK2923	07297W/B	-	-	07565W/B
VL110	21475M/B	10896W/B	13577W/B	-	VK300	21475M/B	-	-	-
VK112	21475M/B	10896W/B	13577W/B	-	VK301	21475M/B	-	-	-
VK116	21475M/B	10896W/B	10896W/B	10896W/B	VK302	21475M/B	10896W/B	13577W/B	13655W/B
VK118	21475M/B	10896W/B	13577W/B	-	VK303	21475M/B	-	-	13655W/B
VK120	21475M/B	10896W/B	13577W/B	-	VK305	21475M/B	10896W/B	13655W/B	-
VK122	21475M/B	10896W/B	13577W/B	13655W/B	VK306	21475M/B	-	-	-
VK124	21475M/B	10896W/B	13577W/B	-	VK307	21475M/B	-	-	13655W/B
VK130	21475M/B	10896W/B	13577W/B	-	VK308	21475M/B	-	-	13655W/B
VK132	21475M/B	10896W/B	13577W/B	-	VK309	21475M/B	-	-	13655W/B
VK145	21475M/B	10896W/B	13577W/B	-	VK310	21475M/B	-	-	-
VK150	07297W/B	-	-	07565W/B	VK311	21475M/B	-	-	-
VK151	07297W/B	-	-	07565W/B	VK315	21475M/B	-	-	-
VK1510	07297W/B	-	-	07565W/B	VK316	21475M/B	-	-	-
VK152	07297W/B	-	-	07565W/B	VK317	21475M/B	-	-	13655W/B
VK153	07297W/B	-	-	07565W/B	VK318	21475M/B	-	-	13655W/B
VK154	07297W/B	-	-	07565W/B	VK319	21475M/B	-	-	13655W/B
VK155	07297W/B	-	-	07565W/B	VK320	21475M/B	-	-	13655W/B
VK1550	07297W/B	-	-	07565W/B	VK325	21475M/B	-	-	-
VK156	07297W/B	-	-	07565W/B	VK326	21475M/B	-	-	-
VK157	07297W/B	-	-	07565W/B	VK327	21475M/B	-	-	-
VK158	07297W/B	-	-	07565W/B	VK3271	21475M/B	-	-	-
VK159	07297W/B	-	-	07565W/B	VK328	21475M/B	-	-	-
VK1590	07297W/B	-	-	07565W/B	VK329	21475M/B	-	-	13577W/B
VK160	07297W/B	-	-	-	VK330	21475M/B	-	-	13577W/B
VK161	07297W/B	-	-	07565W/B	VK331	21475M/B	-	-	13655W/B
VK162	07297W/B	-	-	07565W/B	VK3311	21475M/B	-	-	13655W/B
VK163	07297W/B	-	-	07565W/B	VK332	21475M/B	-	-	13577W/B
VK164	07297W/B	-	-	07565W/B	VK333	21475M/B	-	-	13655W/B
VK166	07297W/B	-	-	07565W/B	VK334	21475M/B	-	-	13577W/B
VK168	07297W/B	-	-	07565W/B	VK337	21475M/B	-	-	-
VK169	07297W/B	-	-	07565W/B	VK338	21475M/B	-	-	-
VK172	07297W/B	-	-	07565W/B	VK339	21475M/B	-	-	-
VK173	07297W/B	-	-	07565W/B	VK340	21475M/B	-	-	-
VK174	07297W/B	-	-	07565W/B	VK341	21475M/B	-	-	-
VK176	07297W/B	-	-	07565W/B	VK342	21475M/B	-	-	13655W/B
VK177	07297W/B	-	-	07565W/B	VK343	21475M/B	-	-	13655W/B
VK178	07297W/B	-	-	07565W/B	VK344	21475M/B	-	-	13655W/B
VK180	07297W/B	-	-	07565W/B	VK345	21475M/B	-	-	-
VK181	07297W/B	-	-	07565W/B	VK346	21475M/B	-	-	13655W/B
VK182	07297W/B	-	-	07565W/B	VK350	21475M/B	-	-	-
VK184	07297W/B	-	-	-	VK351	21475M/B	-	-	-
VK186	07297W/B	-	-	-	VK352	21475M/B	10896W/B	13577W/B	13655W/B
VK188	07297W/B	-	-	-	VK353	21475M/B	10896W/B	13577W/B	13655W/B
VK190	07297W/B	-	-	-	VK354	21475M/B	-	-	-
VK192	07297W/B	-	-	-	VK355	21475M/B	-	-	-
VK194	07297W/B	-	-	-	VK360	21475M/B	10896W/B	13655W/B	-
VK196	07565W/B	-	-	-	VK377	05118CW/B	-	11663W/B	-
VK200	21475M/B	10896W/B	13577W/B	-					
VK202	21475M/B	10896W/B	13577W/B	13655W/B					

# Sprinkler / Wrench List

SIN Number	Wrench				SIN Number	Wrench			
	Standard	Standard wax	Recessed	Light Duty		Standard	Standard wax	Recessed	Light Duty
VK400	08336W/B	-	-	10366W/B	VK549	N/R	-	-	-
VK402	08336W/B	-	-	-	VK550	21475M/B	-	-	-
VK410	08336W/B	-	-	-	VK551	21475M/B	-	-	-
VK412	08336W/B	-	-	-	VK552	21475M/B	-	-	-
VK413	08336W/B	-	-	-	VK556	21475M/B	-	-	-
VK420	08336W/B	-	-	-	VK557	21475M/B	-	-	-
VK430	21475M/B	-	13655W/B	-	VK558	21475M/B	-	-	-
VK449	24689M/B	-	-	-	VK560	21475M/B	-	-	-
VK458	21475M/B	-	13577W/B	-	VK562	21475M/B	-	-	-
VK460	21475M/B	-	13655W/B	-	VK566	21475M/B	-	-	-
VK461	14047W/B	-	-	14031	VK567	21475M/B	-	-	-
VK462	14047W/B	-	-	14031	VK570	07297W/B	-	-	-
VK463	14047W/B	-	-	14031	VK572	07297W/B	-	13032W/B	-
VK464	14047W/B	-	-	14031	VK580	07297W/B	-	-	-
VK465	14047W/B	-	-	14031	VK592	13635W/B	-	-	-
VK466	21475M/B	-	13655W/B	-	VK595	16888M/B	-	-	-
VK4660	21475M/B	-	13655W/B	-	VK598	13635W/B	-	-	-
VK467	21475M/B	-	-	-	VK600	21475M/B	-	13577W/B	-
VK4670	21475M/B	-	-	-	VK601	21475M/B	-	13655W/B	-
VK468	21475M/B	-	13577W/B	-	VK602	21475M/B	-	13577W/B	-
VK4680	21475M/B	-	13577W/B	-	VK603	21475M/B	-	13655W/B	-
VK469	15467W/B	-	-	15466	VK604	21475M/B	-	13577W/B	-
VK470	21475M/B	-	13655W/B	-	VK605	21475M/B	-	13655W/B	-
VK4700	21475M/B	-	13655W/B	-	VK606	21475M/B	-	13655W/B	-
VK472	21475M/B	-	13655W/B	-	VK607	21475M/B	-	13577W/B	-
VK479	21475M/B	-	13655W/B	-	VK608	05118CW/B	-	11663W/B	-
VK480	21475M/B	-	-	16267	VK609	21475M/B	-	13655W/B	-
VK4800	21475M/B	-	-	16267	VK610	21475M/B	-	13577W/B	-
VK481	16208W/R	-	-	16267	VK611	21475M/B	-	13577W/B	-
VK482	18315	-	-	-	VK612	21475M/B	-	13655W/B	-
VK484	21475M/B	-	13655W/B	-	VK613	21475M/B	-	13655W/B	-
VK4840	21475M/B	-	13655W/B	-	VK614	13577W/B	-	-	-
VK486	21475M/B	-	13655W/B	-	VK616	13577W/B	-	-	-
VK4860	21475M/B	-	13655W/B	-	VK617	05118CW/B	-	11663W/B	-
VK490	16208W/R	-	-	16267	VK618	11663W/B	-	-	-
VK492	14047W/B	-	-	14031	VK630	21475M/B	-	13655W/B	-
VK494	23143	-	-	-	VK632	14047W/B	-	-	14031
VK495	23143	-	-	-	VK634	14047W/B	-	-	14031
VK496	23143	-	-	-	VK636	15467W/B	-	-	15466
VK498	23143	-	-	-	VK638	21475M/B	-	13655W/B	-
VK500	13635W/B	-	-	-	VK680	16208W/R	-	-	16267
VK502	N/R	-	-	-	VK681	21475M/B	-	-	-
VK503	13635W/B	-	-	-	VK682	21475M/B	-	-	-
VK504	N/R	-	-	-	VK683	21475M/B	-	-	-
VK506	13635W/B	-	-	-	VK684	21475M/B	-	-	-
VK510	13635W/B	-	-	-	VK685	21475M/B	-	-	-
VK514	13635W/B	-	-	-	VK693	21475M/B	-	-	-
VK520	05118CW/B	-	-	-	VK694	21475M/B	-	-	-
VK530	05118CW/B	-	-	-	VK695	21475M/B	-	-	-
VK531	05118CW/B	-	-	-	VK696	21475M/B	-	-	-
VK532	05118CW/B	-	11663W/B	-	VK740	N/R	-	-	-
VK533	05118CW/B	-	11663W/B	-	VK741	N/R	-	-	-
VK534	05118CW/B	-	-	-	VK742	N/R	-	-	-
VK535	05118CW/B	-	-	-	VK743	N/R	-	-	-
VK536	05118CW/B	-	11663W/B	-	VK744	N/R	-	-	-
VK537	05118CW/B	-	11663W/B	-	VK750	N/R	-	-	-
VK538	15467W/B	-	-	15466	VK751	N/R	-	-	-
VK540	05118CW/B	-	-	-	VK752	N/R	-	-	-
VK544	N/R	-	-	-	VK753	N/R	-	-	-
VK545	-	-	19748	-	VK754	N/R	-	-	-
VK546	N/R	-	-	-					
VK547	N/R	-	-	-					
VK548	-	-	19748	-					



## Sprinkler / Wrench List

SIN Number	Wrench				SIN Number	Wrench			
	Standard	Standard wax	Wax	Recessed		Standard	Standard wax	Wax	Recessed
VK760	N/R	-	-	-	VK793	N/R	-	-	-
VK761	N/R	-	-	-	VK794	N/R	-	-	-
VK762	N/R	-	-	-	VK795	N/R	-	-	-
VK763	N/R	-	-	-	VK796	N/R	-	-	-
VK764	N/R	-	-	-	VK810	10896W/B	-	-	-
VK770	N/R	-	-	-	VK811	10896W/B	-	-	-
VK771	N/R	-	-	-	VK812	10896W/B	-	-	-
VK772	N/R	-	-	-	VK813	10896W/B	-	-	-
VK773	N/R	-	-	-	VK814	10896W/B	-	-	-
VK774	N/R	-	-	-	VK815	10896W/B	-	-	-
VK780	N/R	-	-	-	VK816	10896W/B	-	-	-
VK781	N/R	-	-	-	VK817	10896W/B	-	-	-
VK782	N/R	-	-	-	VK824	10896W/B	-	-	-
VK784	N/R	-	-	-	VK825	10896W/B	-	-	-
VK790	N/R	-	-	-	VK900	21475M/B	-	-	-
VK790	N/R	-	-	-	VK901	21475M/B	-	-	-
VK791	N/R	-	-	-					
VK792	N/R	-	-	-					

N/R = Not required







## Europe, Middle East & Africa

### BENELUX

**Viking SupplyNet bv**  
Eekboerstraat 28b-3  
NL-7575 AX Oldenzaal  
Netherlands  
Tel.: +31 (0)541 573233  
vikingnetherlands@viking-emea.com

### CENTRAL & EASTERN EUROPE

**Viking GmbH**  
Industriestr. 10/12  
D-23840 Bad Oldesloe  
Germany  
Tel.: +49 (0)4531 803 8087  
vikinggermany@viking-emea.com

### FRANCE

**Sprinkler Viking France S.à r.l.**  
Centre d'Affaires CESCO  
4, rue Marconi  
BP 25180  
F-57075 Metz Cedex 03  
France  
Tel.: +33 (0)800 10 29 23  
vikingfrance@viking-emea.com

### IBÉRICA

**Viking Sprinkler S.A.**  
Calle Picos de Europa 4A  
San Fernando de Henares  
E-28830 Madrid  
Spain  
Tel.: +34 91 677 8352  
vikingiberica@viking-emea.com

### ITALY

**Viking Italia S.r.l.**  
Via Pavia, 76  
I-27042 Bressana Bottarone (PV)  
Italy  
Tel.: +39-(0)2- 30550778  
vikingitaly@viking-emea.com

### MIDDLE EAST

**Viking Arabia FZE**  
LOB 19 Office #2007  
Post Box No. 17531  
Jebel Ali Free Zone, Dubai  
United Arab Emirates  
Tel.: +971 (0)4 8895 561  
vikingdubai@viking-emea.com

### NORDIC

**Viking Nordic AB**  
Staffans Väg 5  
S-192 78 Sollentuna  
Sweden  
Tel.: +46 (0)8 594 415 90  
vikingsweden@viking-emea.com

### POLAND

**Viking SupplyNet Sp. z o.o.**  
ul. Żelazna 59  
PL-00 848 Warsaw  
Poland  
Tel.: +48 22 103 30 54  
vikingpoland@viking-emea.com

### ROMANIA & BULGARIA

**Viking Romania S.r.l.**  
Strada Vulturilor 18-18A, cam 3  
The LOBBY  
RO-030855 Bucharest  
Romania  
Tel.: +40 21 311 51 48  
vikingromania@viking-emea.com

### TURKEY

**Viking Turkey Yangın Korunum Sistemleri Ticaret A.Ş.**  
Sahrayıcedit Mah. Halk Sokak  
Golden Plaza C Blok No:29, Kat:4, Daire:8  
Sahrayı Cedit, Kadıköy - 34734 İstanbul  
Turkey  
Tel.: +90 (0)216 403 18 00  
vikingturkey@viking-emea.com

### UK & IRELAND

**Viking SupplyNet Ltd.**  
Unit 2 - Byram House, Newborn Court  
Chapel Street  
Epworth DN9 1HQ  
United Kingdom  
Tel.: +44 (0)1427 871 000  
vikinguk@viking-emea.com

For further information,  
please visit  
[www.viking-emea.com](http://www.viking-emea.com)



For further information, please contact your local Viking sales office or refer to the technical documentation.  
The contents of this publication are subject to modifications without notice.

Photo  
Cover: Fotolia © Janusz Zastocki

Trusted above all.

Viking S.A. | Z.I. Haneboesch, L-4562 Differdange / Niederkorn, Luxembourg | Tel.: +352 58 37 37 - 1, Fax: +352 58 37 36, vikinglux@viking-emea.com

